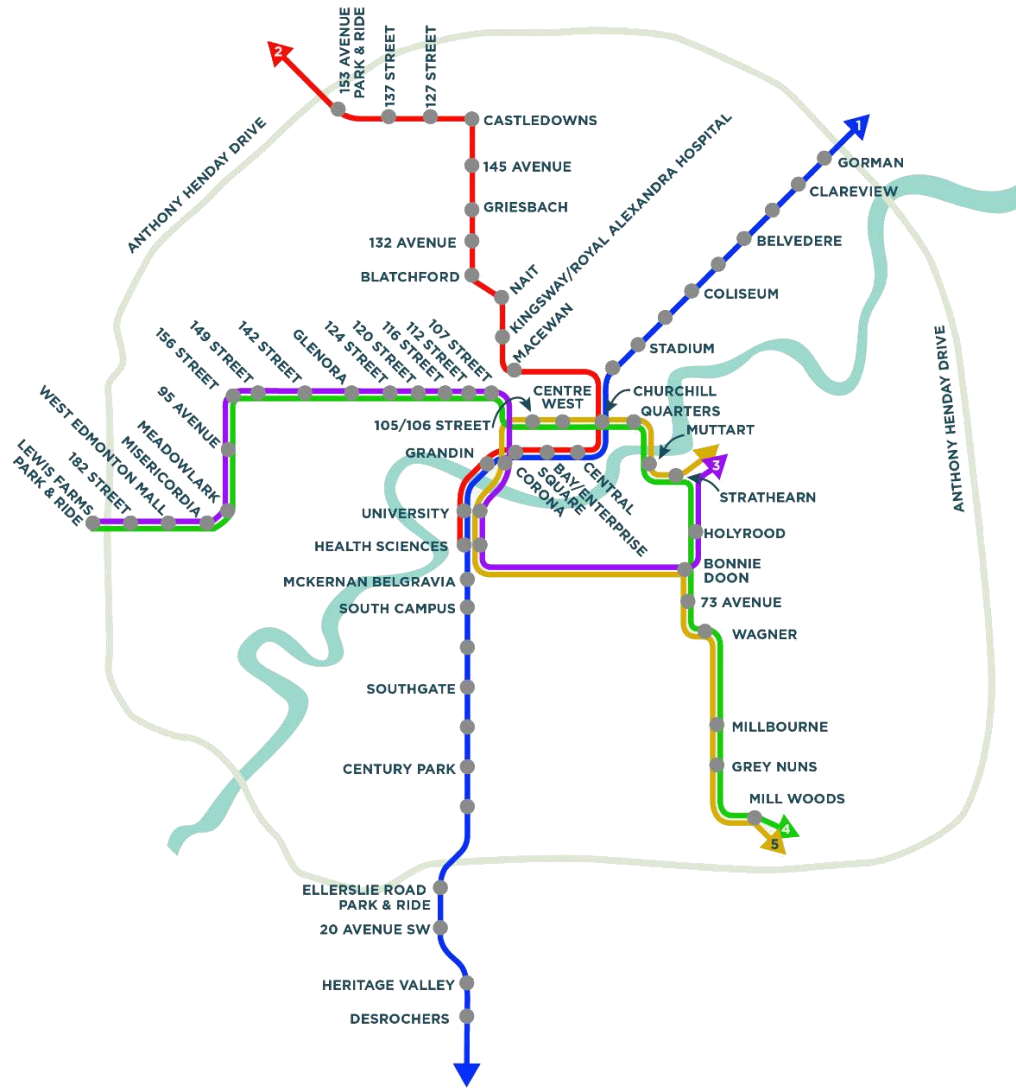




City of Edmonton LRT Crossing Assessment Framework

Presented By: Scott Macintosh and Nat Alampi
Date: June 5, 2018

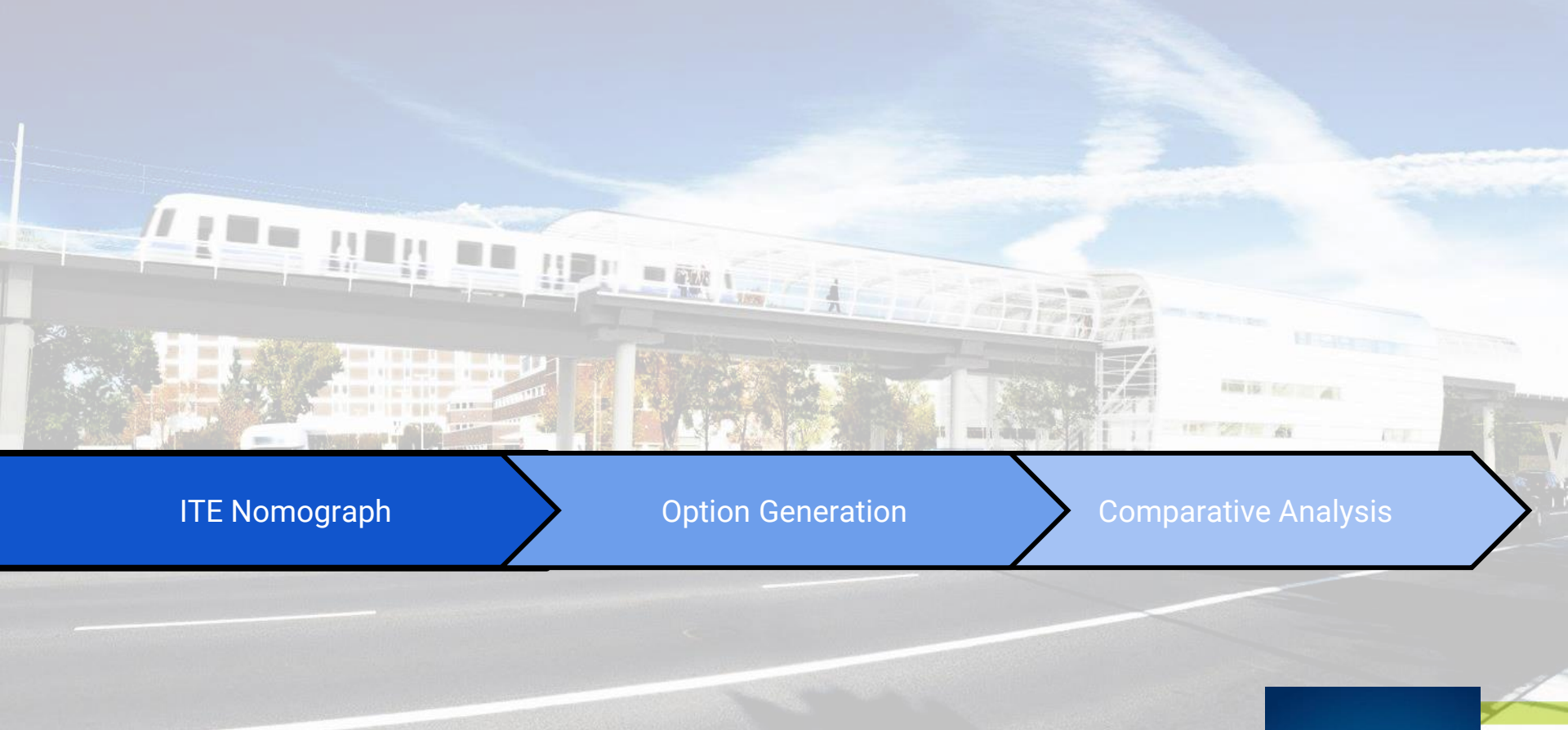
Edmonton LRT Network



Urban LRT Vision



Crossing Assessment Framework



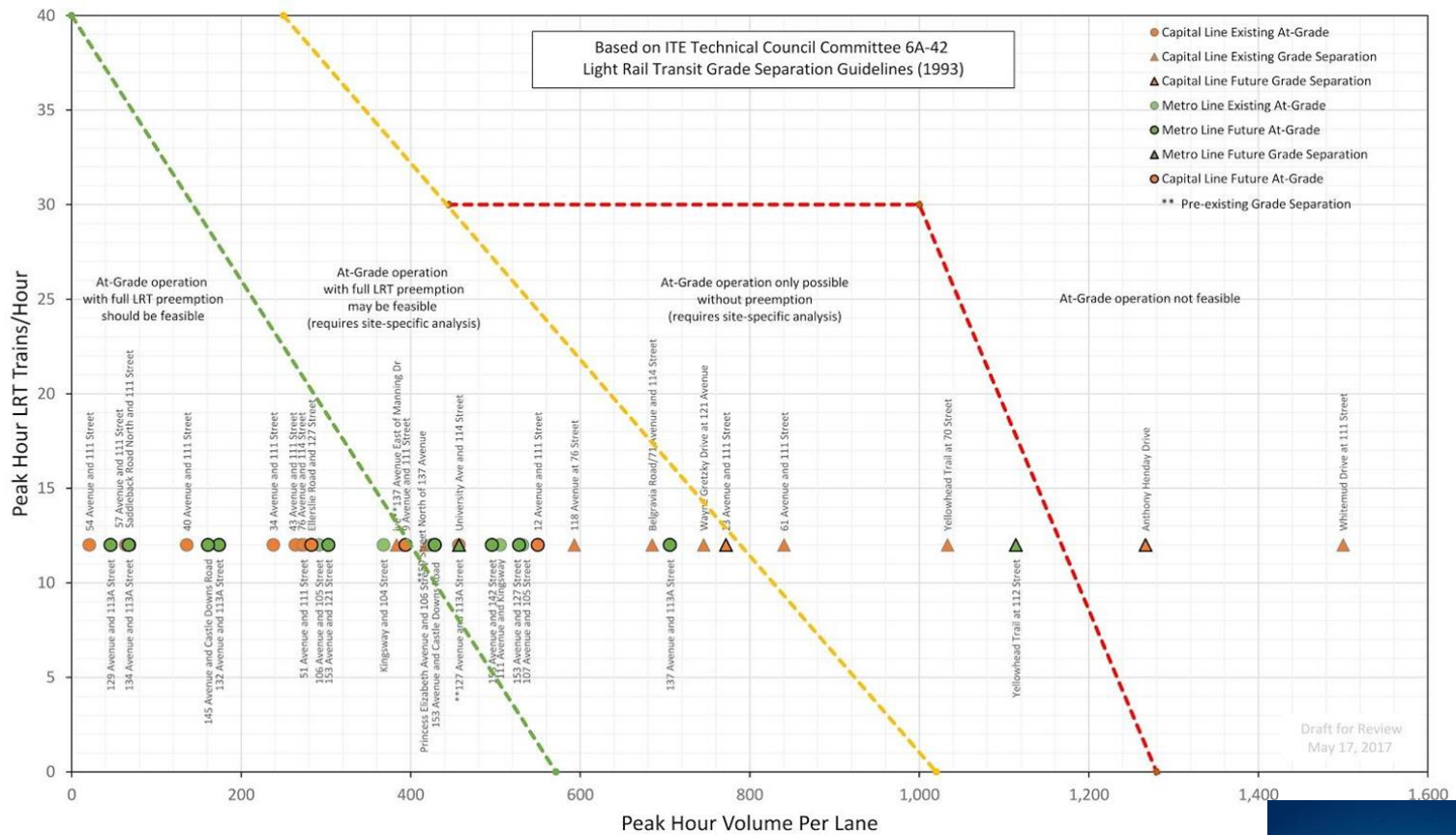
ITE Nomograph

Option Generation

Comparative Analysis

Edmonton

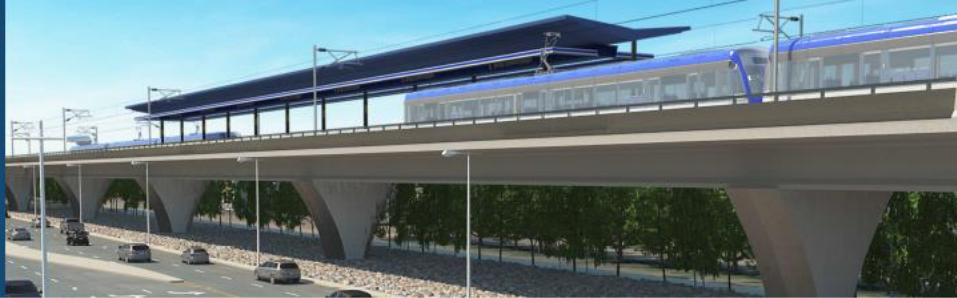
Phase One - ITE Nomograph



Phase Two - Option Generation



Elevated LRT
Example



At-grade LRT
Example



Trenched LRT
Example



Phase Three - Comparative Analysis



The following criteria will be used in assessing the Metro Line NW LRT Crossing Options:

ACCESSIBILITY

How the various transportation modes link between one another and with adjacent developments.

NETWORK OPERATIONS

How the surrounding and broader transportation network is impacted.

URBAN DESIGN & SOCIAL ENVIRONMENT

How the surrounding communities and stakeholders are impacted.

FEASIBILITY & CONSTRUCTION

Feasibility, cost and risk assessments.

Accessibility



Network Operations



Urban Design and Social Environment



Feasibility and Construction



Case Study

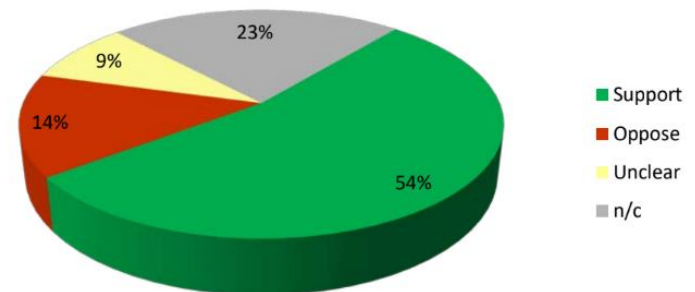


Case Study



	Underpass	At-Grade
Accessibility	✓ ✓	✓ ✓ ✓
Network Operations	✓ ✓ ✓	✓
Urban Design/ Social Environment	✓	✓ ✓ ✓
Feasibility/ Constructability	✓	✓ ✓ ✓

Valley Line West January 24, 2018, Public Engagement
Views on 149 Street Recommendation



Lessons Learned



High Floor

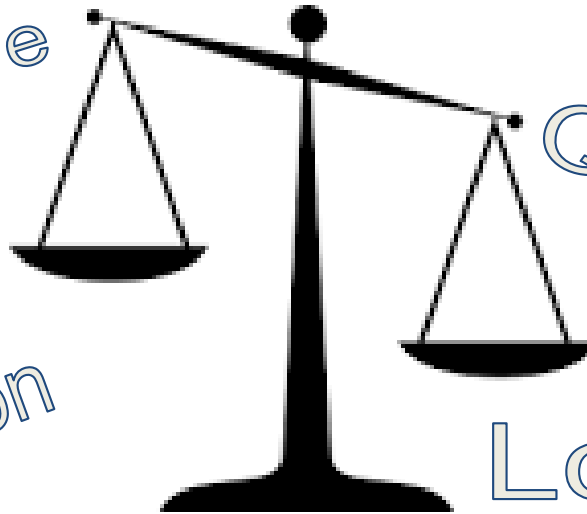
Planning

Quantitative

Traffic Impacts

vs

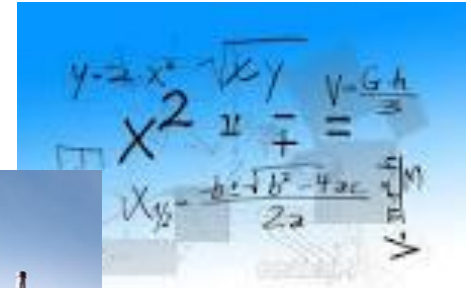
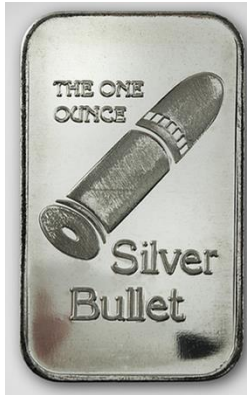
Urban Integration



Qualitative

Low Floor

Conclusions



Q&A

